

SE//EO

Intelligence in Asset Health

Success Cases - Packaging

Global Presence



45+
Countries Presence

500+
Monitored Industry Plants

100,000+
Analysis per Month

1st Case -Packaging Industry – USA – Year 1

	Projected Annual Savings	Projected One Time Savings	Increase Production	Reduced Spoilage	Reduced Spare Parts	Reduced OT	Safety	Reduced Operating Costs
Crown Cork Mankato								
Acoustic Analysis	\$ 8,010.43							X
Thermography		\$ 14,470.49	X			X	X	X
Vibration Analysis		\$ 51,440.70	X	X	X	X		X
Oil Analysis	\$ 40,413.00		X		X	X		X
Total		\$ 114,334.62						



PdM potential savings of \$114,334.62 considering the \$2,130.00 plant downtime cost per hour.

\$114,334.62

2nd Case- Packaging Industry – USA – Year 1

	Projected Annual Savings 2010 - 10 months	Projected One Time Savings	Increase Production	Reduced Spoilage	Reduced Spare Parts	Reduced OT	Safety	Reduced Operating Costs
Crown Cork Conroe								
Acoustic Analysis	\$ 24,140.62							X
Thermography		\$ 43,880.94	X			X	X	X
Vibration Analysis		\$ 74,947.73	X	X	X	X		X
Oil Analysis	\$ 29,473.80		X		X	X		X
Total		\$ 172,443.09						



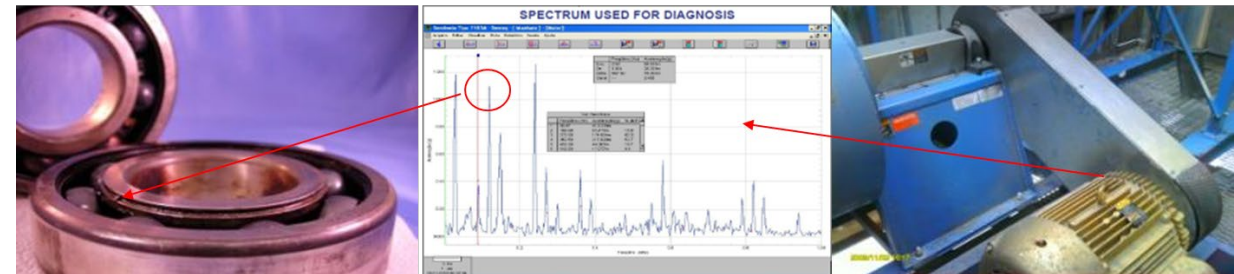
\$172,443.09

Packaging Industry – USA – Year 1

On December 17th, Vibration Analysis detected an outer race failure on the motor bearings.

The plant had the opportunity to schedule the repair on a Sunday with no planned production in February to change the bearing and avoid downtime.

Saved hours	Impact on the Plant	Breakdown cost	Savings
4	100%	\$ 8,520.00	\$ 8,520.00





Packaging Industry – USA – Year 1

Secondary PdM benefits that can not estimate the value:

- Safety
- Secondary damage of breakdown
- Overtime if failure happens on weekends
- Secondary analysis of the data
- Evaluation after repair
- Better control of the lubrication system
- Team Motivation

Investments Now Core Values Always Long Term Partnership

SE//EQ
Intelligence in Asset Health

