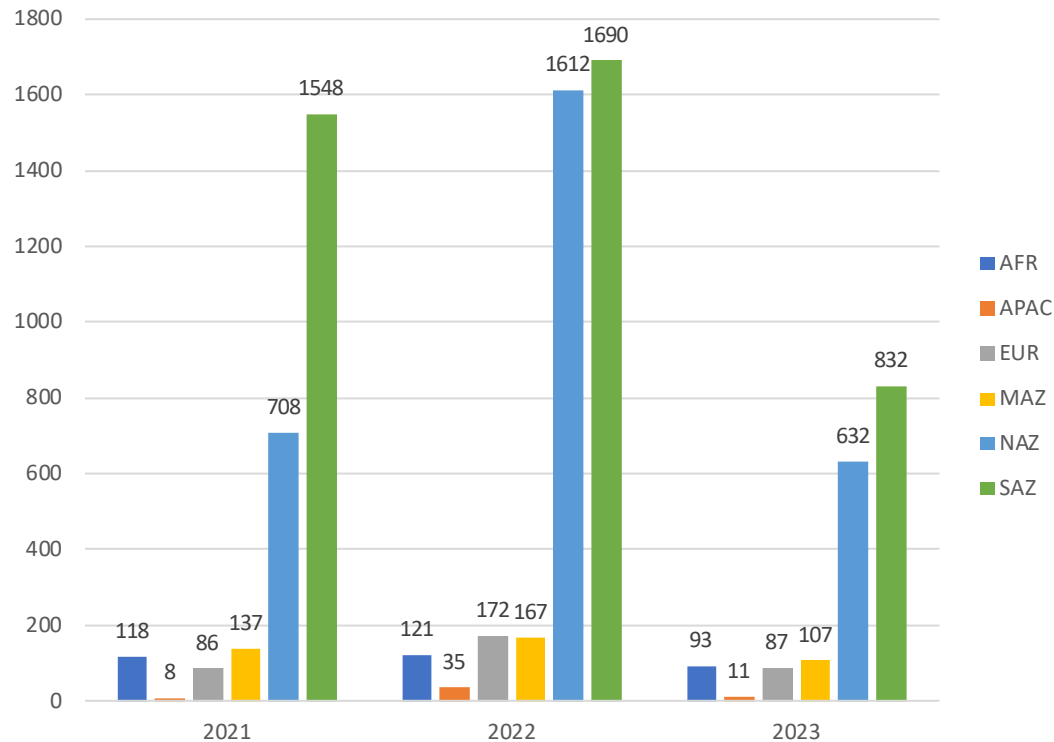


# SEMEQ – Global Beverage Industry

August 23<sup>rd</sup>, 2023

# Results – Potential Downtime Avoidance

■ Total Wrench time from DRs feedback 2021, 2022 & 2023. (hours)



■ Potential Saving considering \$500 as downtime cost per hour x Wrench time: **\$ 4M+**

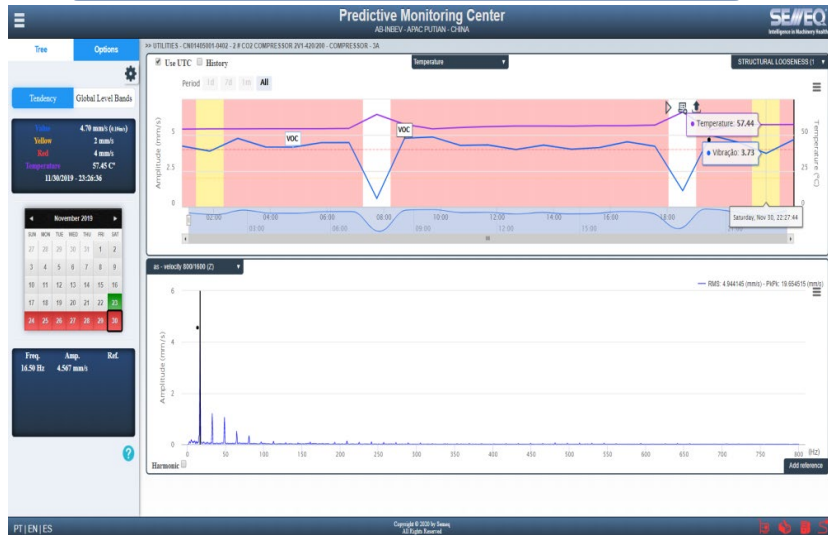
**Saving: \$ 4 Mi**

RDP\_ONLINE S  
 FEEDBACK\_STATUS CLOSED  
 TECHNIQUE VIBRATION ANALYSIS

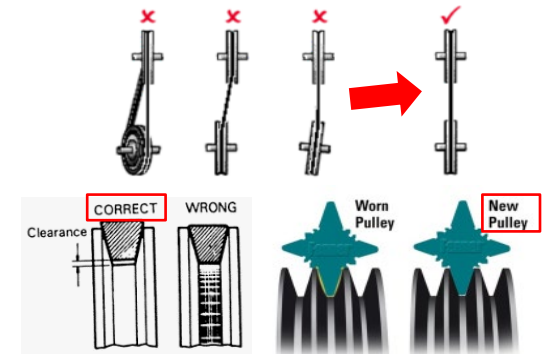
Count of IST_IN_HOURS Column Labels							
Row Labels	AFR	APAC	EUR	MAZ	NAZ	SAZ	Grand Total
2021	118	8	86	137	708	1548	2605
2022	121	35	172	167	1612	1690	3797
2023	93	11	87	107	632	832	1762
<b>Grand Total</b>	<b>332</b>	<b>54</b>	<b>345</b>	<b>411</b>	<b>2952</b>	<b>4070</b>	<b>8164</b>

\*Source: MySemeq.com and SAP

## DR 0001 – MISALIGNMENT & STRUCTURAL LOOSENESS



## FIELD INVESTIGATION AND INTERVENTION

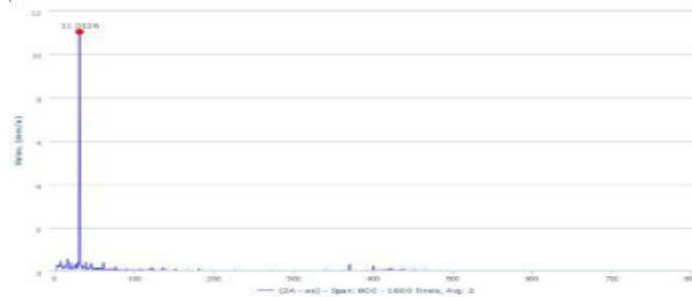


# AFRICA

## MISALIGNMENT



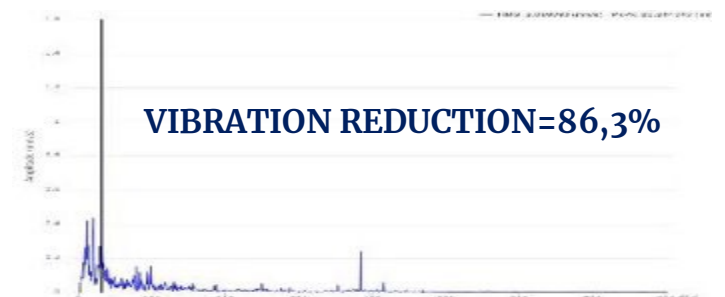
## BEFORE INTERVENTION



### Actions:

1. Pulley was replaced, Belts Replaced, Pulley Aligned and Belts Tensioned. Bolts torqued to specification
2. Create a SWI for Filler Gearbox replacement and Pulley Fitting.
3. Conduct an OWD on the create SWI and Coach Artisans.

## AFTER INTERVENTION



- Impacts / Savings :
- Elimination of deterioration
- Extend life and reduced costs
- Reliability reestablished

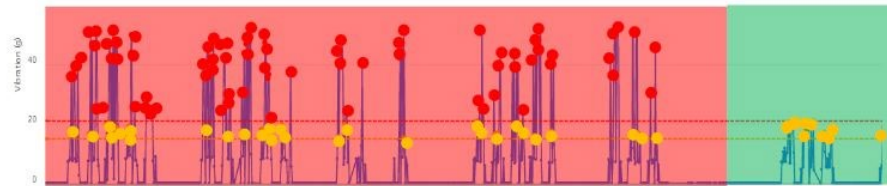
# EUROPE

## FILLER SCRB1 GEARBOX

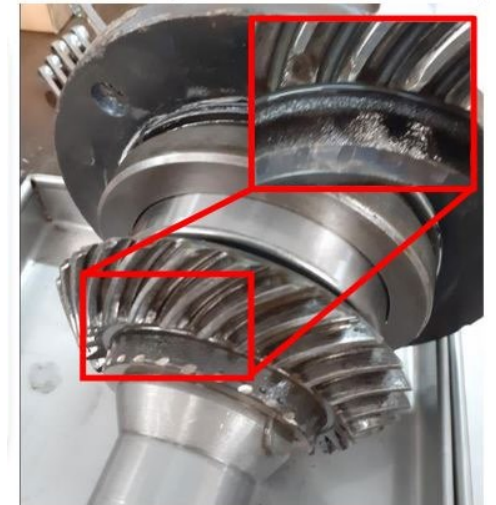


DR 0002  
RESULTS & ROOT CAUSE

Rotating looseness and damaged gear.



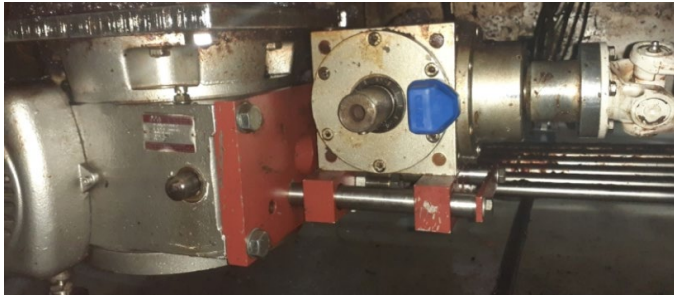
## COUPLING DAMAGED



INTERVENTION

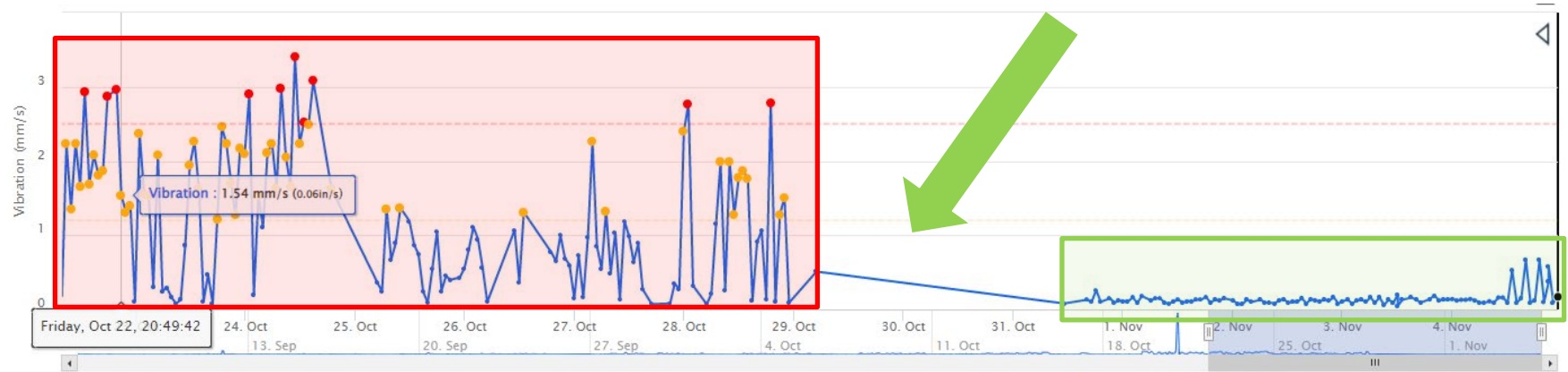
# NORTH AMERICA ZONE

## POOR LUBRICATION



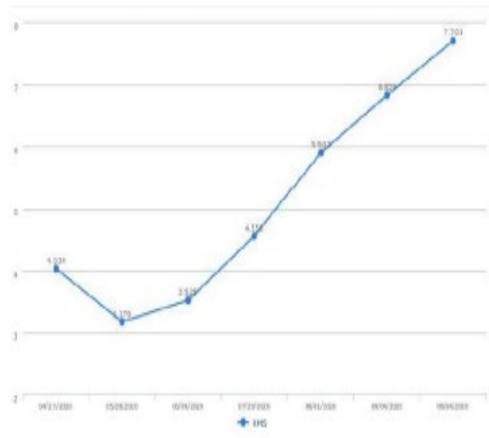
## FILLER -> INFEED GEARBOX

## INTERVENTION



# MIDDLE AMERICA ZONE

## COUPLING AND LUBRICATION



## FIELD INVESTIGATION

### OIL ANALISYS



### ALIGNMENT VALIDATION



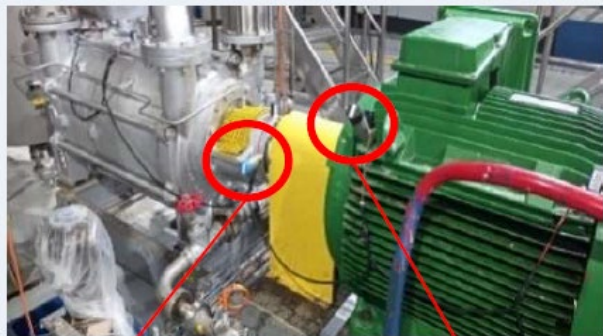
## RESULTS & ROOT CAUSE

### COUPLE SITUATION

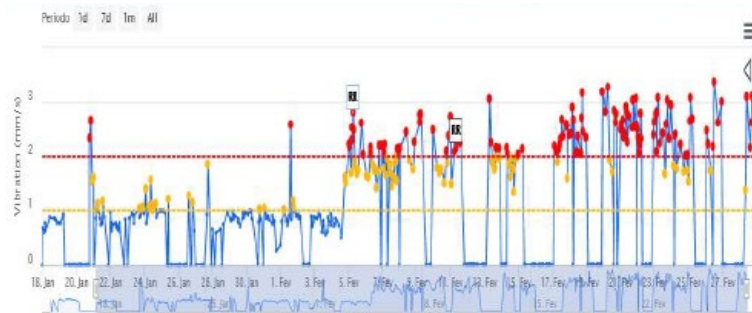


# SOUTH AMERICA ZONE

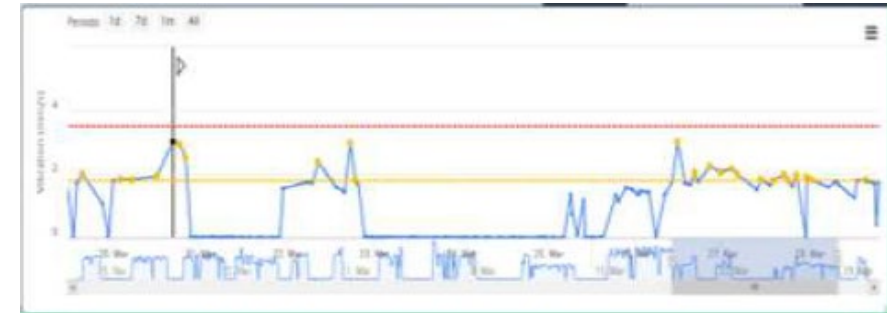
## MISALIGNMENT



## BEFORE INTERVENTION



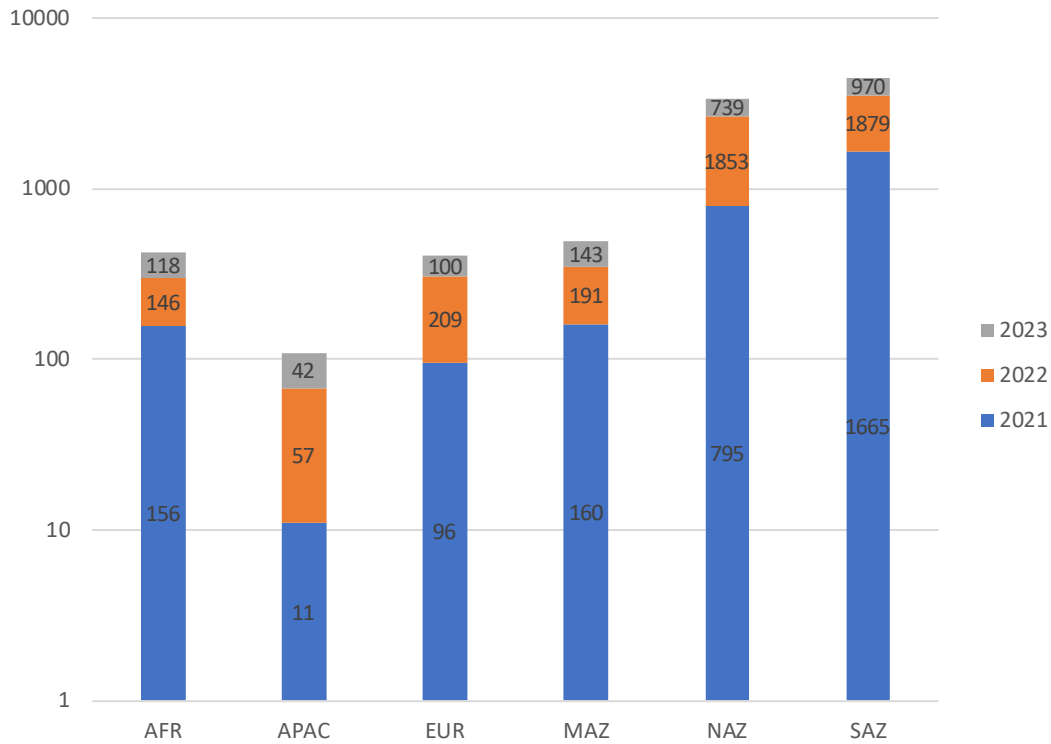
## AFTER INTERVENTION





# Results – Potential Failure Modes Detected

Work request issued



Failure Mode Classification

