

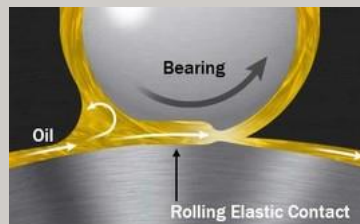


# PREDICTIVE MAINTENANCE IN FOCUS

## POOR LUBRICATION

Lubrication is an essential aspect of an asset lifecycle. It ensures efficiency and prevents breakdowns. Therefore is crucial to have optimum lubrication and a maintenance strategy. We can list the factors that contribute to poor lubrication:

- Contaminated environment
- Contaminated lubricants
- Insufficient lubrication
- Wrong lubricants
- Overgrease
- Component wear
- Ineffective seals
- Damaged seals



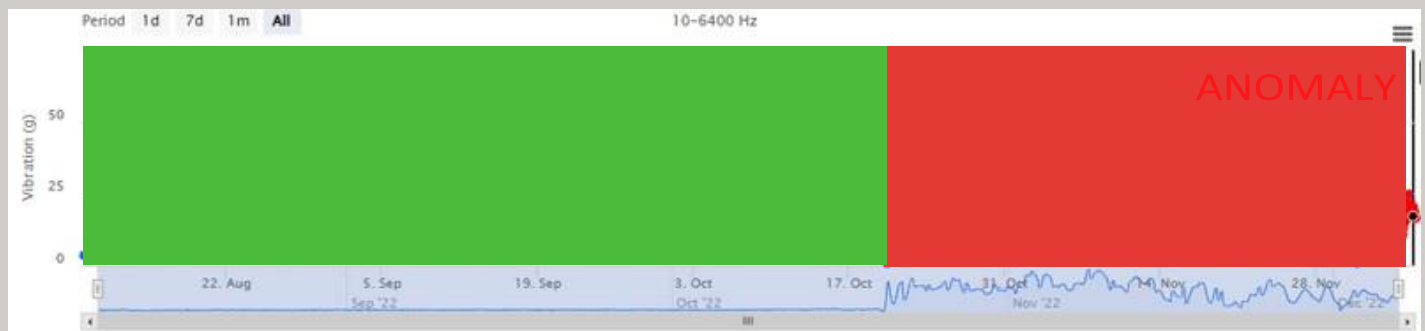
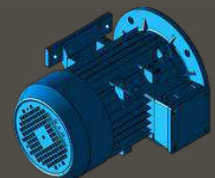
Bearing lubrication - Source: machinerylubrication.com



Haystack spectrum - A Ladle Hole motor fan

## A LADLE HOLE FAN

### ELECTRIC MOTOR



Vibration trend - A Ladle Hole Fan



A LADLE HOLE FAN - MOTOR

